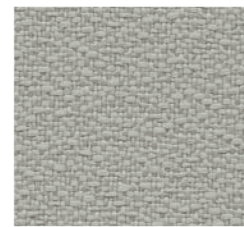


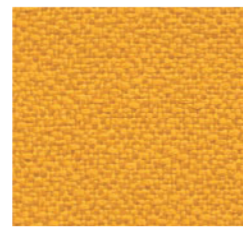
Iris

CU50



Fog

CU03



Goldenrod

CU27



Apricot

CU47



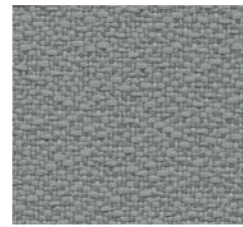
Ruby

CU67



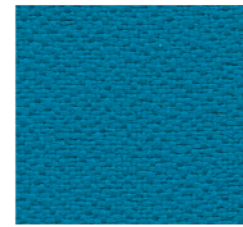
Pear

CU84



Frost

CU22



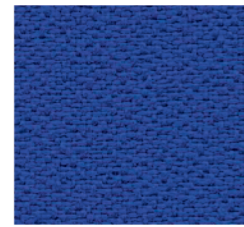
Peacock

CU97



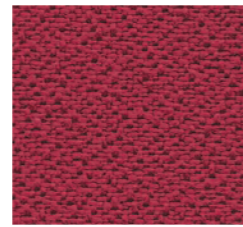
Morel

CU24



Sapphire

CU09



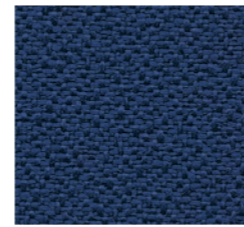
Marsala

CU63



Bark

CU25



Indigo

CU06



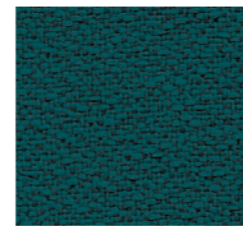
Iron Ore

CU19



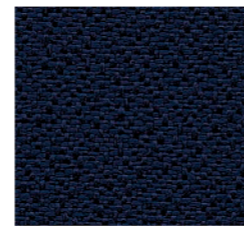
Espresso

CU49



Jade

CU83



Navy

CU98



Black

CU10

Centurion

Application

Panel/Seating

Content

100% Polyester

Width

54"

Weight

13 ounces per linear yard

Finish

Nano-Tex® Stain Resistant

Abrasion

750,000 double rubs (W)

ACT Registered Certification



Multiple factors affect fabric durability and appearance retention, including end-user application and proper maintenance. Wyzenbeek results above 100,000 double rubs have not been shown to be a reliable indicator of increased fabric lifespan.

Flame Resistance

ASTM E-84 (Tunnel Test),
Class A or 1
NFPA 260 (UFAC Class 1)
California TB 117-2013 compliant
Compatible with California TB 133
(CAL 133) when ordered as an
FC option

Maintenance

W: Clean with water-based shampoo
or foam upholstery cleaner.



Nano-Tex is the first high-performance nanotechnology that builds permanent spill and stain resistance into the fiber structure of the fabric. It bonds with the fibers, protecting the material at the atomic level from dirt without depriving it of air. nanotex.com

Allsteel®

Allsteel Inc.
Muscatine, Iowa 52761
allsteeloffice.com

©2019 Allsteel Inc.
Allsteel is a registered
trademark. Nano-Tex is
a registered trademark.

Form # CU (04/19)

Allsteel®